

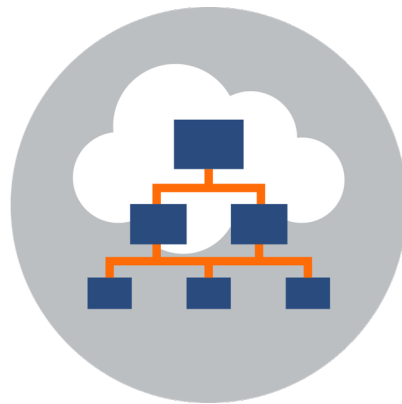
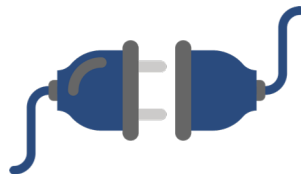
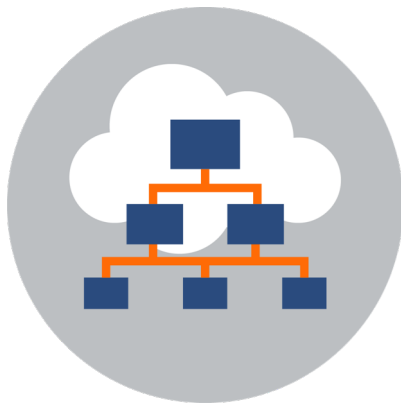
# Learning Tools Interoperability®

## LTI® for Educators



# What is LTI, Really?

LTI is a common technical ‘language’ used to navigate among systems and tools, exchanging data between them



# Three Key Features of LTI

## Connect



## Confirm

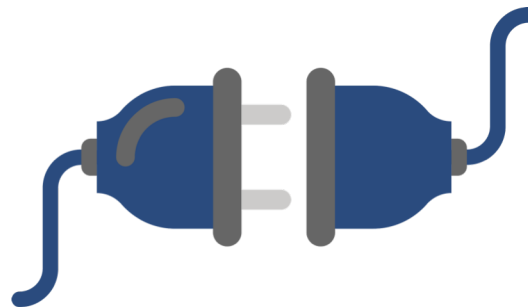


## Exchange



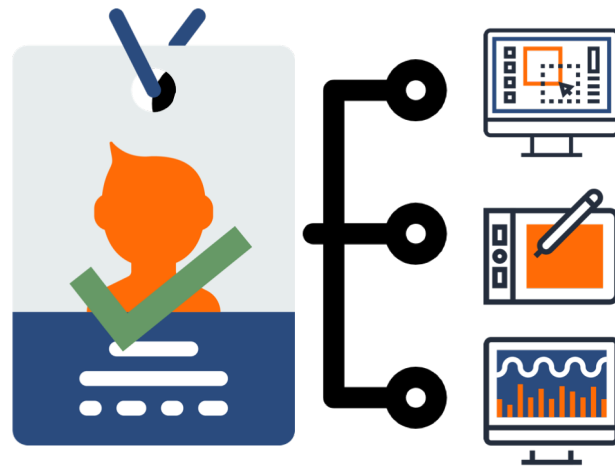
# Securely **connect** learning platforms and tools, e.g.

- Publisher content
- Specialized “labs”
- Assessment tools
- Plagiarism detectors
- Any certified compliant teaching and learning tool



# Confirm the tool, the user and context

- Tool is trusted, verifies users are allowed to access
- Uses institutional/LMS signon credentials



# Exchange information in a teaching and learning workflow

Course Content

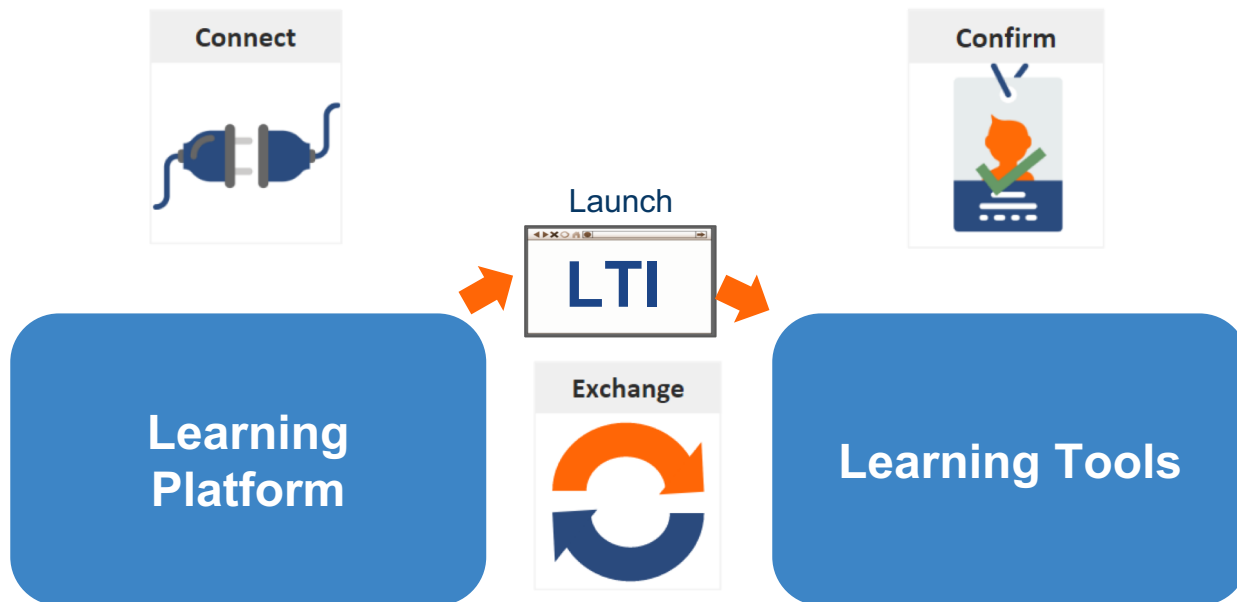
Grades



Assignments

Class Lists

# LTI's Essential Features



# LTI Advantage Builds on LTI for the Trusted Exchange of Teaching & Learning Activities





# LTI Advantage: Deep Integrations at the *Speed of Now*

- Makes it easier to innovate and meet the unique learning needs of students
- Saves time spent provisioning courses
- Dramatically reduces integration times

# Assignment and Grade Services

Enables faculty to sync grades and comments in third-party tools into a single place, such as the LMS gradebook, which gives students and faculty a clearer picture of learning progress in one place.

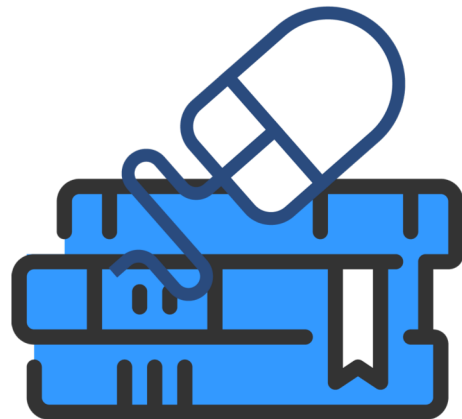
- Gradable assignments shared with tool
- Numeric scores returned to LMS gradebook
- Assessor's comments returned if provided
- Multiple results supported in a single exchange
- Instructor override and history of attempts allowed



# Deep Linking

Simplifies the arduous task of selecting and adding links to content when developing a course, including deep integration to collections of content such as playlists and a table of contents.

- Select and add course content in a few clicks
- Add playlists and tables of content
- Enable links and other HTML content
- Add pre-registered tools with a few clicks



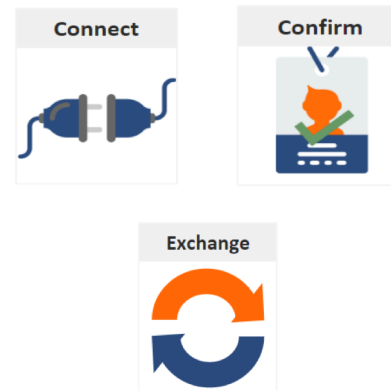
# Names and Role Provisioning Services

Automates course enrollment into a third-party tool in a safe and secure manner, and allows faculty to receive reporting on student activity within the tool.

- Exchange a list of users and their roles
- Provision a learner using LTI's secure exchange
- Learn who has not yet accessed a tool



# Thin Common Cartridge: Content from the Cloud



**LTI links and  
searchable metadata**

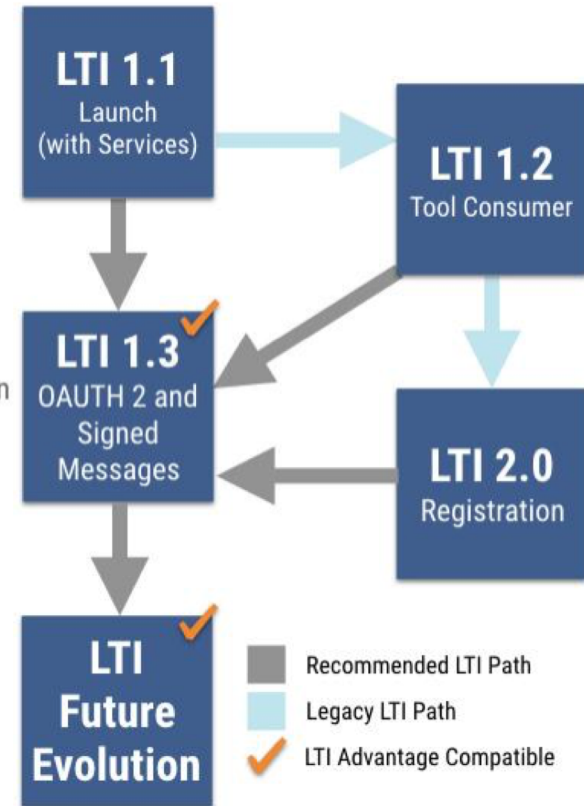
# LTI is compatible with your sign-on systems

- IMS standards, including LTI, are 100% compatible with authentication standards including SAML, Active Directory/ADFS and the OAUTH2 framework
- IMS standards ***authenticate the tool*** and ***pass on the already-authenticated users' information*** and ***role*** between the platform and external tool

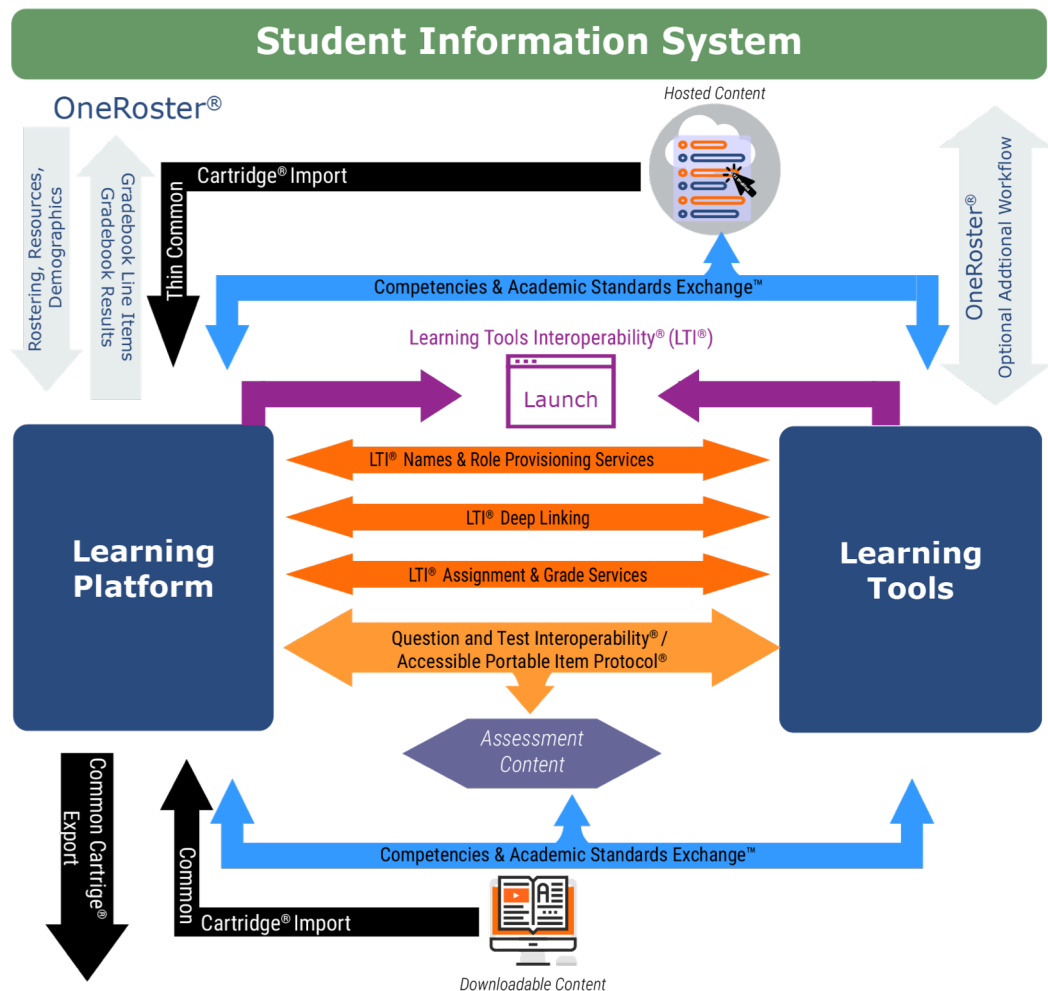
# Recommended LTI Adoption Roadmap

- Adopts the industry standard protocol, OAuth2 for authentication services, and JSON Web Tokens (JWT) for secure message signing
- The best framework for IMS' updated security model is LTI 1.3

Available for Member Adoption  
April 2018



# A Connected Ecosystem: IMS Standards in Action





# Are your suppliers IMS Certified?



# Are your suppliers IMS Certified?

“The reality is, we won’t seek to be certified unless our customers require it. Then we will.”

-Learning Platform Executive



# Insist on Certified LTI Products

**Reliability** *Guaranteed backing of expert IMS technical staff*

**Security and Privacy** *Secure and controllable data exchange*

**Usability** *Tool integrations that meet the highest industry standards*

**Choice** *Virtual catalog of certified-compatible teaching and learning tools and digital curriculum*

# Learning Tools Interoperability®

## LTI® for Educators

**Connect**



**Confirm**



**Exchange**

