



USING ONEROSTER® AND LTI® ADVANTAGE TOGETHER

Realizing the Potential of your Digital Ecosystem

Realize the potential of your digital ecosystem to impact learning with **OneRoster** and **LTI Advantage**, open standards from **IMS Global Learning Consortium**. Use the standards with student information systems (SIS), platforms, tools, and other apps **certified** by IMS to:

- Go **Digital on Day One** by automating time-consuming administrative tasks at the start of a new school year and beyond
- Ensure seamless integrations and interoperability with **secure** data exchange
- Free up teacher time to focus on instruction
- Enhance the learning experience with a variety of rich and engaging digital resources
- Transfer score and assessment results data from a variety of resources into a learning platform such as a learning management system (LMS) and SIS gradebooks

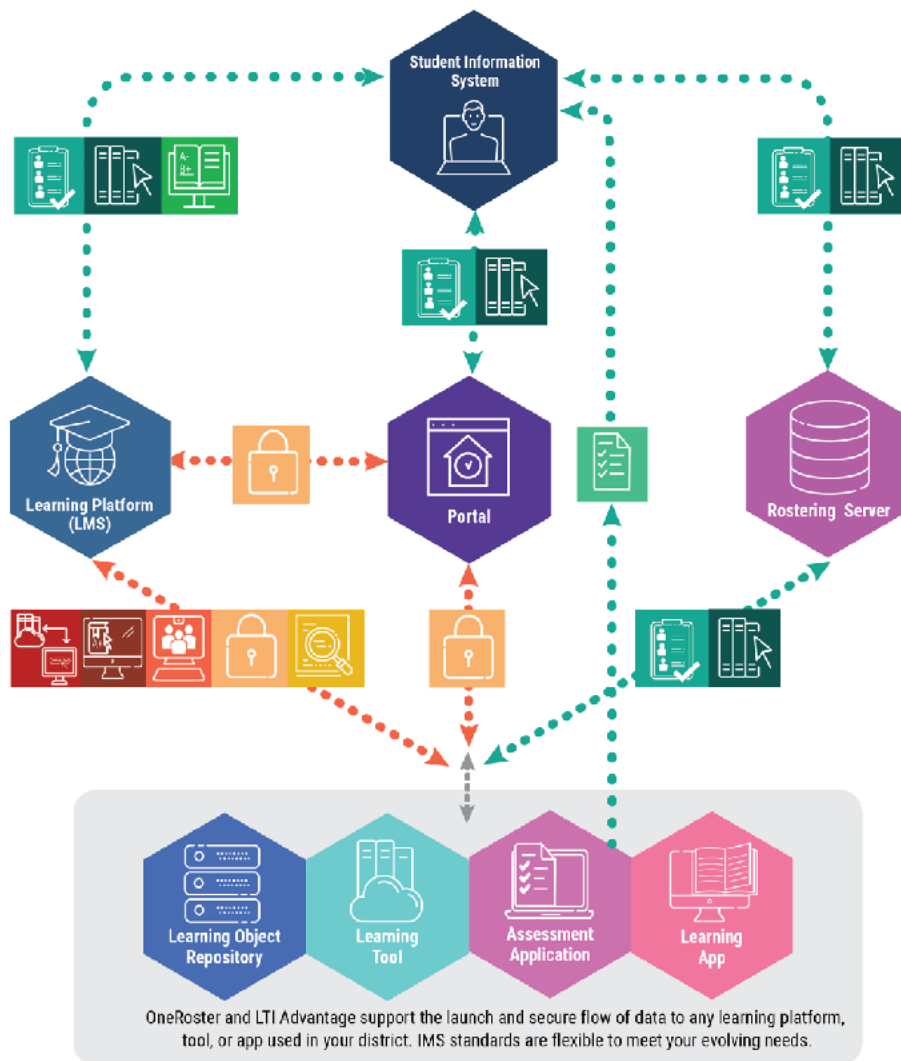
OneRoster and LTI Advantage are flexible. Your district can use both standards with any number or variety of platforms, tools, and apps in your digital ecosystem (see example in Figure 1). Adopting OneRoster and LTI Advantage together adds efficiency, ensures digital resources are available to teachers and students on the first day of learning, and provides better teaching and learning experiences.

Digital Day One

Are You Ready to Realize the Potential of Your District's Digital Ecosystem?

Learn more at www.imsglobal.org/about/k12.

OneRoster & LTI Advantage Ecosystem



OneRoster

Add efficiency by automating tasks from your SIS to platforms, tools, and apps



Rostering

Automate rostering from the SIS for platforms, tools, and apps through syncing



Resources

Automate assigning resources to users based on roles



Gradebook

Sync grades from the LMS gradebook with the SIS gradebook



Assessment Results Profile for Gradebook Service

Sync assessment scores, not necessarily tied to a course, with the SIS gradebook

LTI Advantage

Bringing secure launches, rich digital resources, and real-time data together in your LMS for better student outcomes



Names & Role Provisioning Services

Add users to tools and apps in an LMS course in real-time



Deep Linking

Add content from third-party tools to a course in the LMS in real-time



Assignment & Gradebook Services

View scores from tools and apps in real-time in the LMS gradebook



LTI 1.3

Ensure secure launches with the new IMS Security Framework



LTI Resource Search

LTI Resource Search defines how to search digital repositories for a set of resources.

FIG 1. SAMPLE ECOSYSTEM DIAGRAM

OneRoster

OneRoster services ensure your district is digital on day one by automating time-consuming administrative tasks and providing secure interoperability and data exchange—**using the IMS Security Framework**—from your SIS to portals, rostering servers, and teaching and learning resources in your digital ecosystem. After the initial setup, these services require no manual entry, occurring through syncing at preset intervals.

OneRoster services include:



Rostering

Automate enrollment by pushing courses, classes, and rosters (class lists) from your SIS to platforms, portals, or rostering servers with a flexible service that offers two formats, CSV or REST API, for data exchange. Demographic data can be included.



Resources

Automate assigning resource permissions for classes and courses based on user roles. Includes assigning a role independent of an institutional role and assigning content in bulk outside the context of a class.



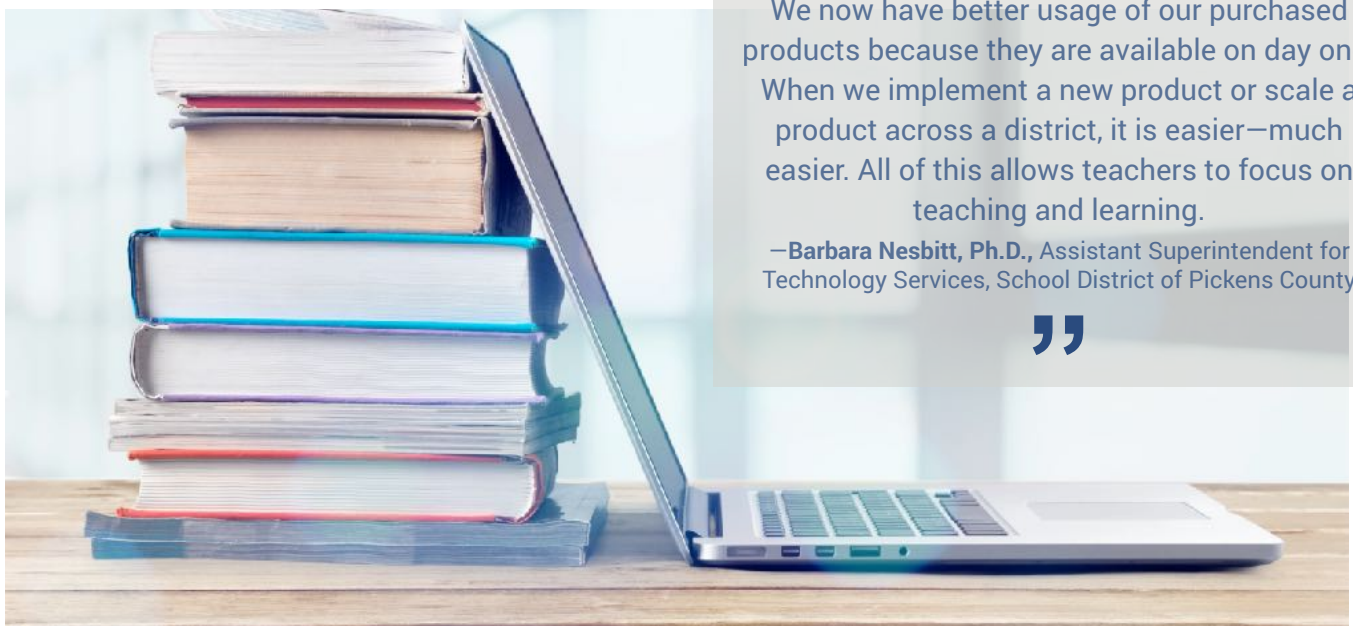
Gradebook

Populate your SIS gradebook with an automated exchange of scores from your LMS gradebook at preset intervals, ensuring accuracy and freeing up teacher time.



Assessment Results Profile for Gradebook Service

Transfer results from an assessment platform to your SIS gradebook for assessments not necessarily associated with a course. Results can be disaggregated and aligned to academic standards with **Competencies and Academic Standards Exchange® (CASE®)**.



“

We now have better usage of our purchased products because they are available on day one. When we implement a new product or scale a product across a district, it is easier—much easier. All of this allows teachers to focus on teaching and learning.

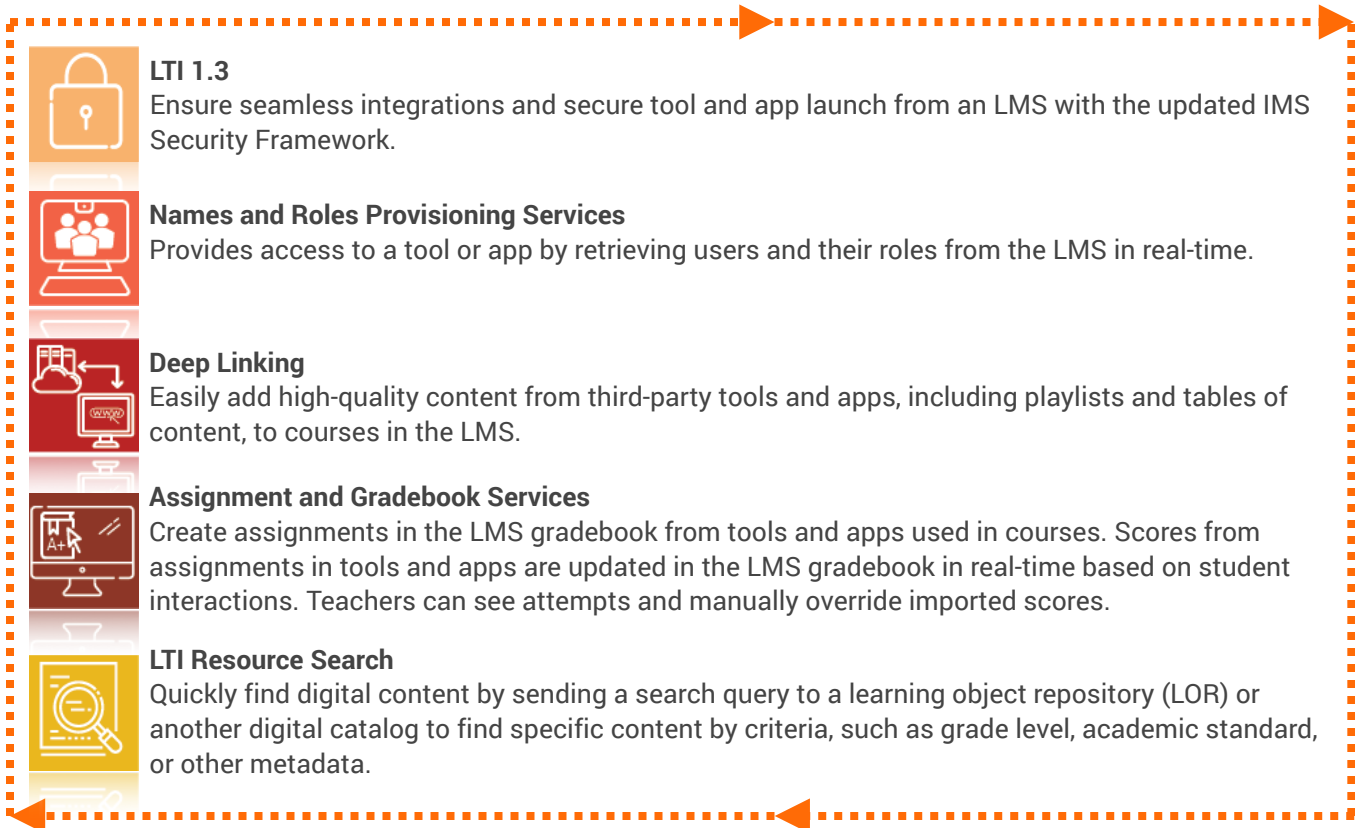
—Barbara Nesbitt, Ph.D., Assistant Superintendent for Technology Services, School District of Pickens County

”

LTI Advantage

LTI Advantage supports using digital resources to enrich learning through seamless and secure, real-time integration and interoperability among learning platforms, tools, and apps. Learning tool and app integrations, as well as integrations from a portal, are managed centrally within the LMS. The core of LTI Advantage, **LTI 1.3**, is used for secure user authentication and to launch tools and apps directly from the LMS or portal without additional logins.

The LTI Advantage services and **LTI Resource Search** power better teaching and learning by removing technical barriers, freeing up teacher time, and providing real-time data and insights for student interactions to drive teacher decisions and promote student agency. These LTI services include:



OneRoster and LTI Advantage

OneRoster and LTI Advantage integration points include Student ID, Resource ID, Assignment ID, and Assessment ID. The sample digital ecosystem in Figure 2 (on the following page) shows a typical flow of the secure integrations and interoperability for both standards with the sequence explained in more detail. OneRoster data exchanges occur through preset sync intervals. LTI Advantage integrations and data exchanges occur in real-time, based on user interactions.

OneRoster & LTI Advantage Secure Flow of Data

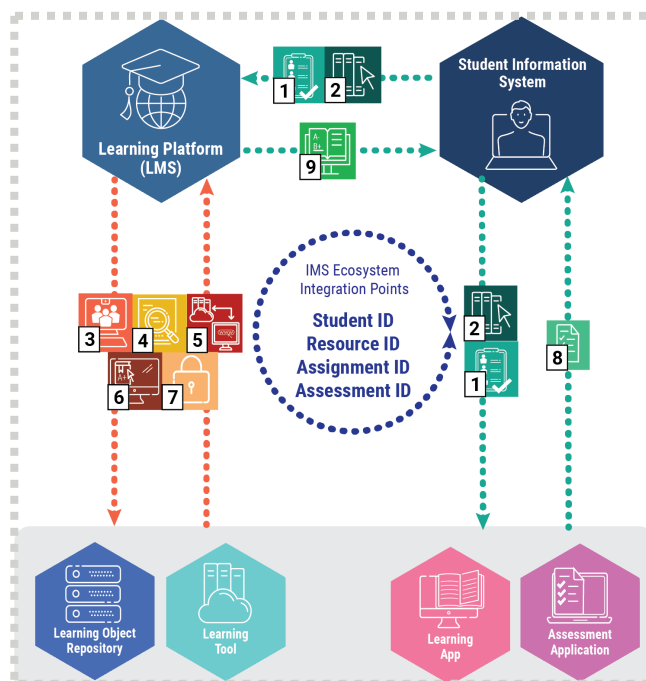
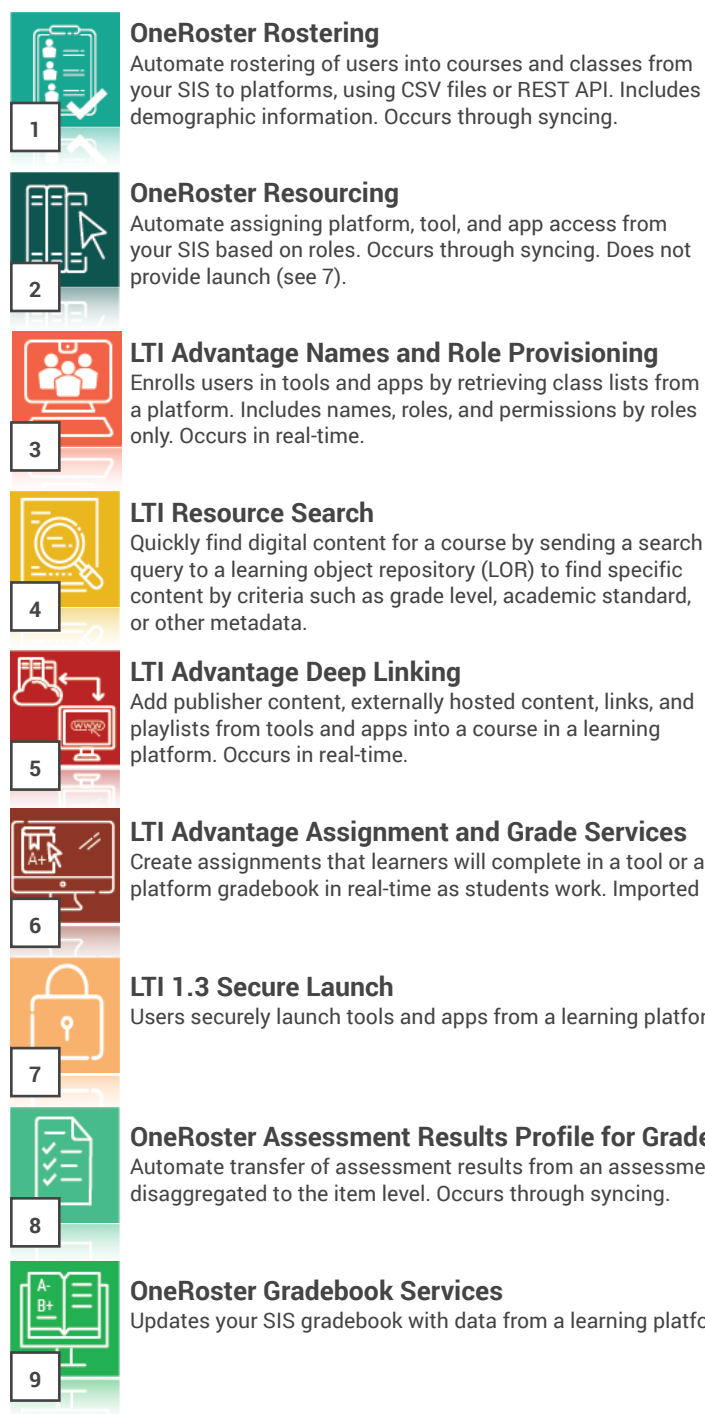


FIG 2. SAMPLE ECOSYSTEM DIAGRAM WITH FLOWS OF SECURE INTEGRATIONS AND INTEROPERABILITY

Realize a Better Future

Use OneRoster, LTI Advantage, and LTI Resource Search together to advance your digital ecosystem using more innovative teaching and learning models that work for every student.

Learn more at www.imsglobal.org/about/k12.