

Pulling the Curtain on Student Data Privacy

Panelists

Brent Engelman

*Director of Education Data and Information Systems
Council of Chief State School Officers*

Linda Feng

*Software Architect & Chief Privacy Officer
Unicon*

Jason Morales

*Business Strategy Leader, Data & AI
Microsoft*

Nick Thompson

*Assistant Director,
Common Collaborative Learning Environment
UCLA*

Pulling the Curtain on Student Data Privacy Agenda

- 1 - Background and Context (10 Mins)
- 2 - Questions for Panelists and Audience (15 mins)
- 3 - Summary and Wrap Up (5 mins)

Background and Context

Problem

Universities & School Districts
need a way to assess
behavior of 3rd party apps
against their data privacy and
security requirements

Apps need a way to respond
to requirements from each
University

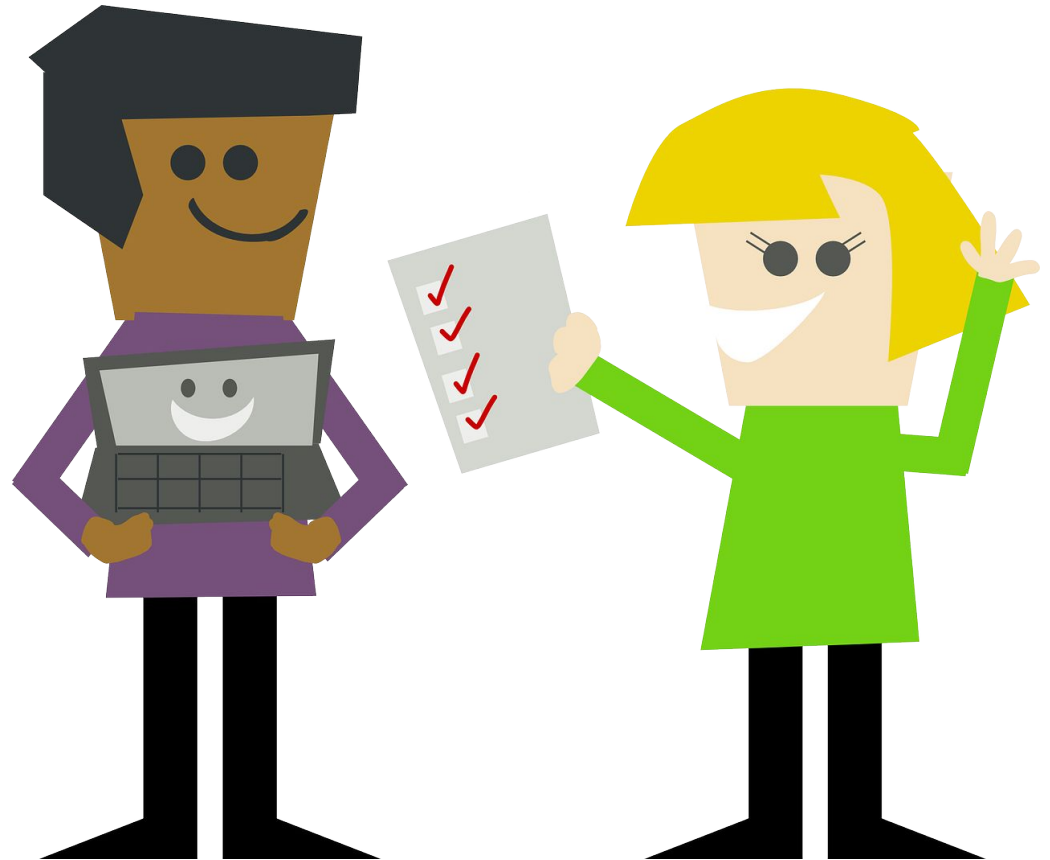


IMS App Vetting

Helps institutions AND suppliers understand and address privacy concerns in a cooperative manner

Open Line of Communication

Collaboration between districts/institutions and vendors



IMS Global Lite App Vetting Rubric (Draft)

The following rubric may be used as a guide while vetting applications.

The rubric is still in draft format and only available to IMS members. Feedback on the rubric may be sent to appvetting@imglobal.org

The Rubric

Lite version has

- 4 Sections
- 5 questions in each section
- 20 questions TOTAL

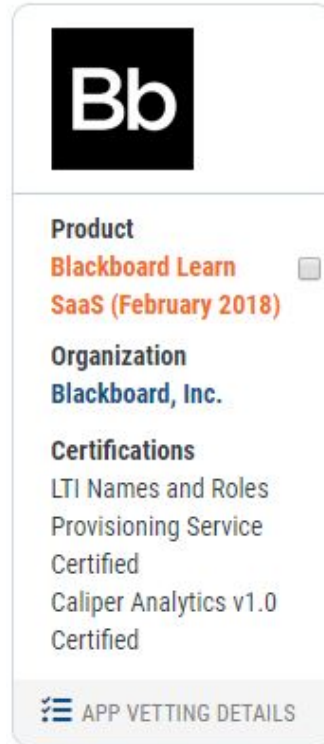
3 ratings:

- **Meets Expectations**
- **Does Not Meet Expectations**
- **Meets Expectations (Reservations)**

Data Collected	Does Not Meet Expectations	Meets Expectations (Reservations)	Meets Expectations
The policies list all data collected	Policies do not list data it collects	Policies give a broad statement of data it collects	Policy lists the data collected
The policies indicate how data is collected	No indication of how data is collected	Policy gives a broad statement of how data is collected	Policies state specifically how data is collected
The policies state who owns the data	Policies do not state who owns the data	User owns data but supplier grants itself control on the use of the data	Policy states the user owns the data alone
The policies allow users to delete their data entirely	Policy does not allow users to delete their data or mention of how to delete data	Policy de-identifies users. cannot fully delete data	Policies allow users to delete data entirely after a period of time
The policies state the retention of data	Policy does not include a data retention policy	Policy has a 90 day retention policy	Policy has a 60 day retention policy
Security	Does Not Meet Expectations	Meets Expectations (Reservations)	Meets Expectations
Policies state how data is protected	No indication of how data is protected	Broad statement with no specifics on steps taken to protect data	Policy lists steps it takes to protect data
Policies state all confidential & sensitive information is encrypted throughout	No data encryption or mention of data encryption	Data encrypted at login only	Data encrypted throughout
Policies state whether or not it enforces strong password creation	Does not enforce strong password creation or mention of requirements	Provides guidance for password creation	Enforces strong password creation
policies indicate whether or not it has 2 step authentication	Does not have 2 step authentication	Uses the simplest form of authentication	Offers 2 step authentication but does not enforce it
Policies state the use of cookies	Uses cookies for purposes not related to functionality of app	States the use of cookies but does not list cookies	Lists all cookies used and each cookies purpose
Third Party Data Sharing	Does Not Meet Expectations	Meets Expectations (Reservations)	Meets Expectations
The policies list all 3rd parties	Policy says it may share but does not list	Policy lists all 3rd parties as app	Policy lists 3rd parties separately

“Yelp” for EdTech Privacy

Product Directory



Uses “lite” version of rubric

Viewable by IMS members

App Vetting Alliance

<https://www.imsglobal.org/activity/app-vetting>

Questions:

From the point of view of Student Data Privacy, what are the ***biggest barriers*** you're experiencing with adopting technology/applications for your institution?

Questions:

How do *different requirements between Higher Education and K12* affect vendors who need to comply with required privacy policies?
How should it be reflected in an App Vetting rubric?

Questions:

How can IMS Global assist ***State agencies*** in their work to promote student data privacy?

Questions:

What do *product suppliers* see as their role in the conversation?

Questions:

In your organizations, ***who*** (what organizational roles) need to be engaged in this subject?
Academic, technical administrators, chief security officers?

For More Information

App Vetting Task Force

<https://www.imsglobal.org/app-vetting-and-privacy>

Contact: **Kevin Lewis** (klewis@imsglobal.org)

IMS Project Manager, App Vetting Program

or **Cary Brown** (cbrown@imsglobal.org)

Higher Education Program Director